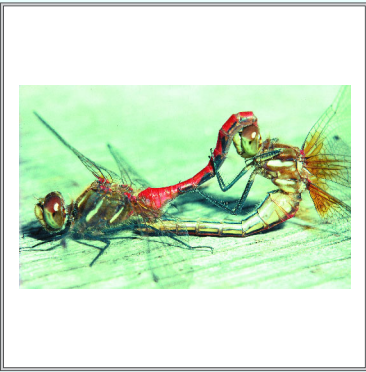
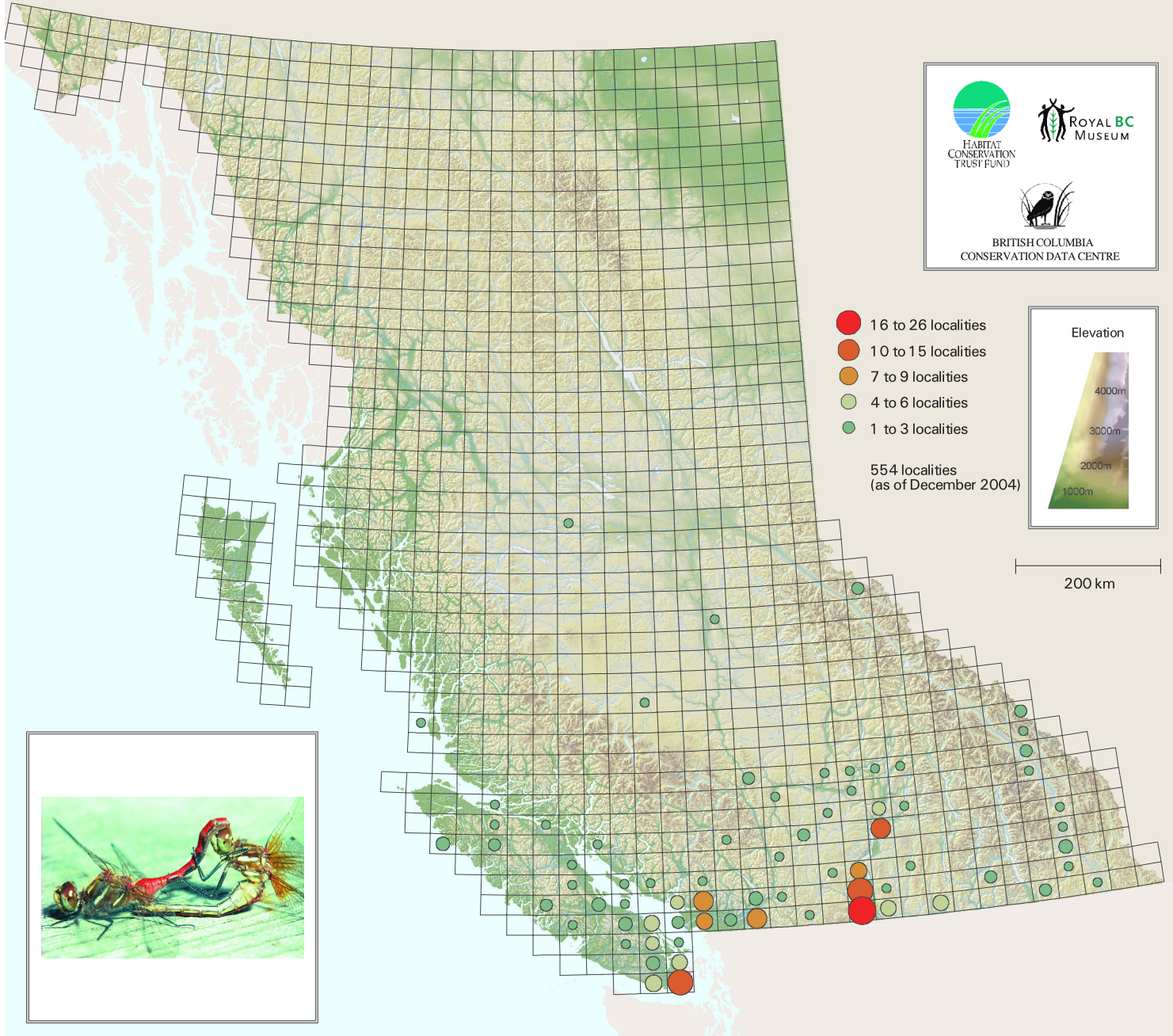
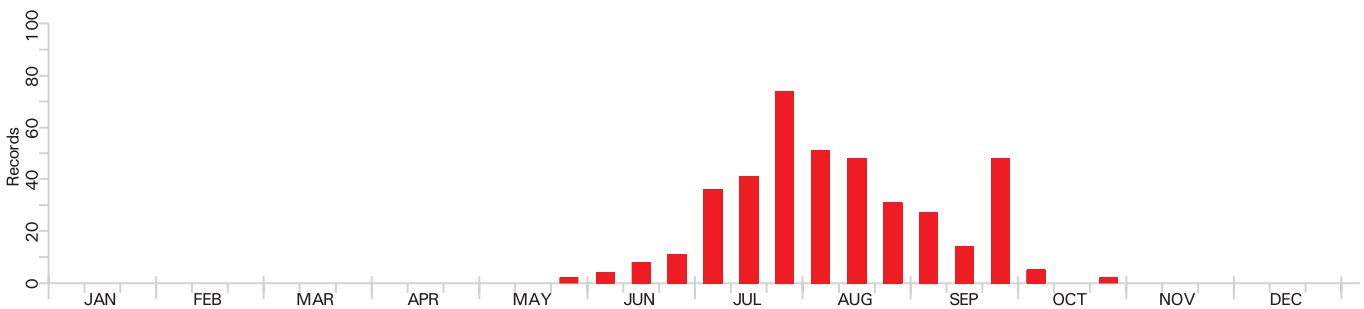


Sympetrum pallipes
Striped Meadowhawk

Frequency of Records by Locality by NTS Mapsheet



Seasonal distribution of adult records (based on 10-day increment levels)



Each map grid presents a mapsheet of 1:50,000 scale in the National Topographic Series. The information is from the databases of the Royal BC Museum and the Spencer Entomological Museum (University of BC).